



MIRASOL RESOURCES LTD

Mirasol Resources Ltd. Joaquin Project & Virginia Vein Zone Santa Cruz, Argentina

March 2010

Mirasol Resources Ltd.
1510-789 West Pender Street
Vancouver, BC V6C 1H2
(604) 602-9989
www.mirasolresources.com

TSXV - MRZ

MIRASOL RESOURCES LTD.

TSX-V: MRZ

Focused on gold and silver discovery in the Americas

MANAGEMENT and DIRECTORS

Mary L. Little, *President, CEO and Director*– M.Sc., MBA, 25 years as geologist, gold analyst and country manager, 15 years in South America

Stephen C. Nano, *V.P. Exploration*, B.Sc. (Hons.) –20 years as exploration and management roles, Latin America , Asia Pacific & Central Asia.

Timothy W. Heenan, *Exploration Manager and Director*, B.Sc., 25 years as exploration geologist, throughout the Americas

Paul G. Lhotka, *Principal Geologist*, Ph.D., P. Geol. – 25 years in exploration as technical and country manager, 12 years in Latin America

Douglas B. Silver, *Independent Director*, M. Sc., 25 years as mining industry analyst, entrepreneur, geologist, currently CEO of International Royalty Corp.

Nick DeMare, *Independent Director, CA*, President of Chase Management Inc. and Board member of several TSX listed companies.



Share Structure

| | |
|------------------------------------|-------------------------------|
| Shares Outstanding (Mar. 22, 2010) | 32,448,181 |
| Options | 2,501,000 |
| Warrants | 1,622,720 |
| Fully Diluted (Mar. 22, 2010) | 36,571,901 |
| Closely Held – Founders | 3,755,003 (11.7 %) |
| Recent Price/ Market cap | <i>C\$2.00/ \$ 73 million</i> |
| Recent price range | <i>C \$0.60/ \$3.00</i> |
| Cash position | <i>C \$5.5 million</i> |



MIRASOL EXPLORATION IN PATAGONIA

TEAM: Premier exploration team in Santa Cruz Province, Argentina

FOCUS: Project generation – precious metals – since 2003; IPO in May 2005

TEAM DISCOVERY RECORD: Seven discoveries moving towards development

Cerro Negro

Joaquin

Bajo Negro

Navidad

Eureka

Veta Sulfuro (La Paloma)

+ Virginia (Julia Vein)

MIRASOL PROPERTIES: Portfolio of more than 20 properties:

Drill Stage with high quality targets = 8

Project generation pipeline; JV's with producers

OPERATING ABILITY: Technical team based in Mendoza, Argentina;

In-house geologists, geophysical technician, logistical, targeting

MANAGEMENT: > 80 years cumulative experience; successfully
operating in Argentina & Latin America



Location – South America, Argentina Santa Cruz Province

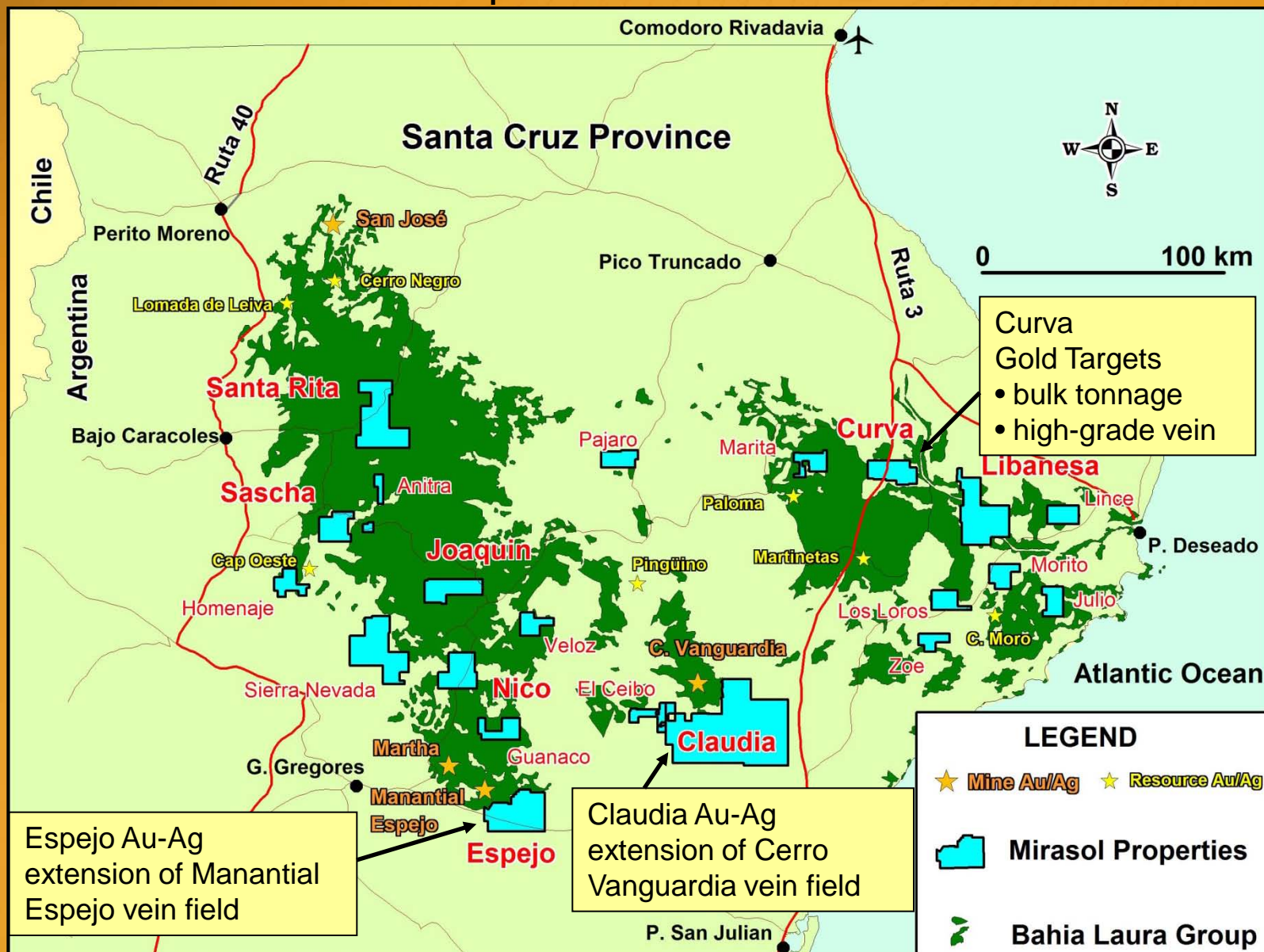


Southern Argentina, Patagonia; an Emerging Precious Metals Region

- Exploration history of less than 30 years.
- A significant, new Au + Ag + Base Metal Province.
- Geological Setting – Massive extensional regime hosting mainly low- sulphidation precious metals systems
- Modern deposit discoveries in the 0.5 Moz to 5.0 Moz gold equivalent sizes.
- Last five years have doubled the number of new mineralized systems.
- New concepts, new technology have contributed to increased discovery pace
- Potential upside for new discovery



Mirasol Properties, Santa Cruz Province





MIRASOL RESOURCES LTD

Joaquín Project, a JV with Coeur d'Alene – Newest Drilling Results

La Negra Structure



Discovery outcrop
418 g/t Ag; 1.1 g/t Au



Valley hosting Negra structure



Table 1. Joaquin Project – La Negra Prospect Drill Results Jan. 11, 2010

| Drill Hole | Intercept | From (metres) | To (metres) | Intercept length (metres) | Core Recv. (%) | Silver (g/t) | Gold (g/t) | AgEQ (g/t) |
|---------------------|-----------|---------------|-------------|---------------------------|----------------|--------------|------------|------------|
| DDJ-44 | 1st | 46.1 | 54.9 | 8.8 | 98% | 110 | 0.43 | 138 |
| including | | 47.2 | 52.9 | 5.7 | 97% | 151 | 0.64 | 192 |
| DDJ-44 | 2nd | 59.0 | 78.0 | 19.0 | 95% | 31 | 0.56 | 67 |
| including | | 61.5 | 76.0 | 14.5 | 95% | 34 | 0.69 | 79 |
| DDJ-45 | | 61.8 | 87.3 | 25.6 | 92% | 33 | 0.14 | 43 |
| DDJ-46 | | 15.0 | 76.1 | 61.1 | 98% | 83 | 0.18 | 95 |
| including | | 22.7 | 23.5 | 0.9 | 100% | 1,850 | 4.68 | 2,154 |
| DDJ-47 | | 64.3 | 71.0 | 6.7 | 88% | 29 | 0.07 | 33 |
| DDJ-58 | | 23.0 | 40.3 | 17.3 | 71% | 1,979 | 0.29 | 1,998 |
| including | | 25.0 | 29.2 | 4.2 | 72% | 7,584 | 0.96 | 7,646 |
| Previously released | | | | | | | | |
| DDJ-43* | | 18.0 | 43.4 | 25.4 | 74% | 1,164 | 0.21 | 1,178 |
| including | | 22.2 | 25.5 | 3.3 | 71% | 7,753 | 1.17 | 7,829 |

* Assays from hole DDJ-43 were confirmed by check assays at an independent laboratory and core recoveries are now included above.

- Silver equivalent is calculated as $\text{AgEQ g/t} = \text{Ag g/t} + 65 \times \text{Au g/t}$. Metallurgical recoveries are unknown and therefore assumed to be 100%.

- Primary intersections are calculated at a cutoff grade of 20 g/t silver equivalent (AgEQ) with some internal dilution allowed at the discretion of the project's Qualified Person.

- "Included" intersections are calculated at a 50 g/t or higher cutoff grade.

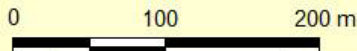
- Reported grades are not capped.

- Estimated true widths have not been calculated.

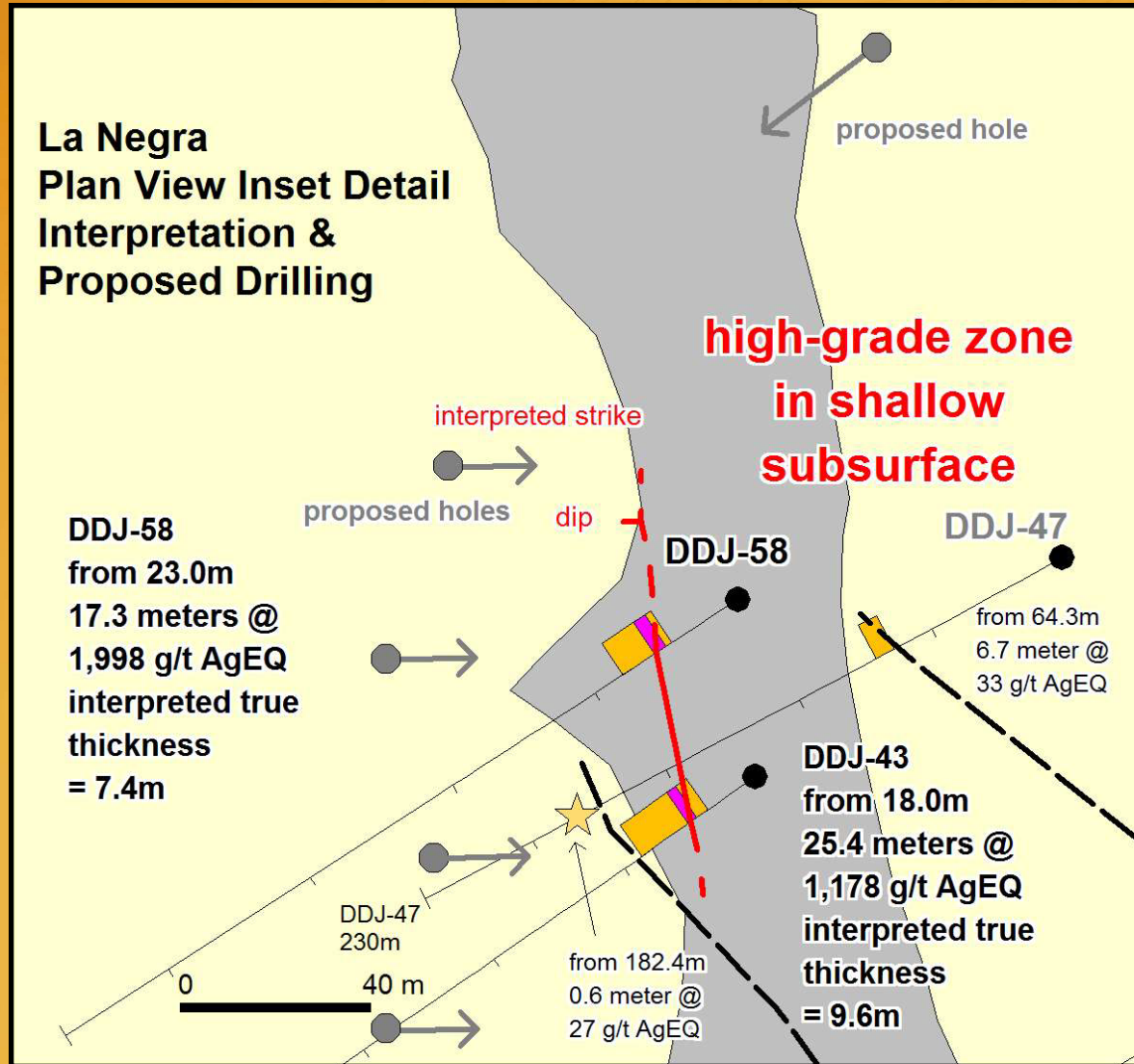




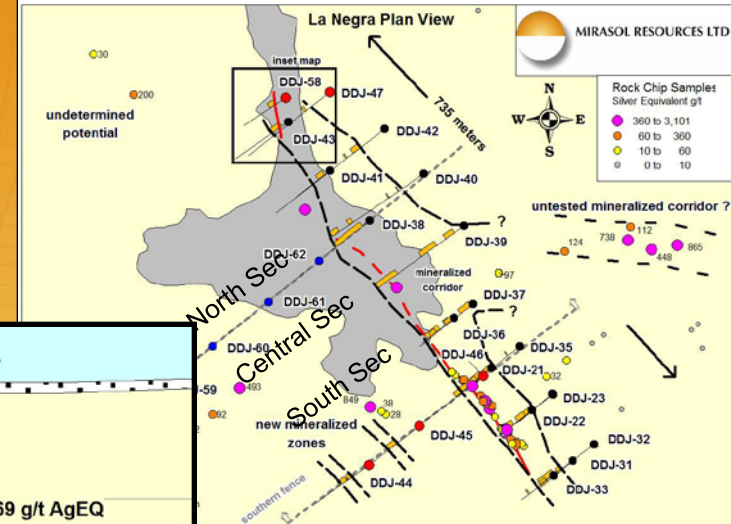
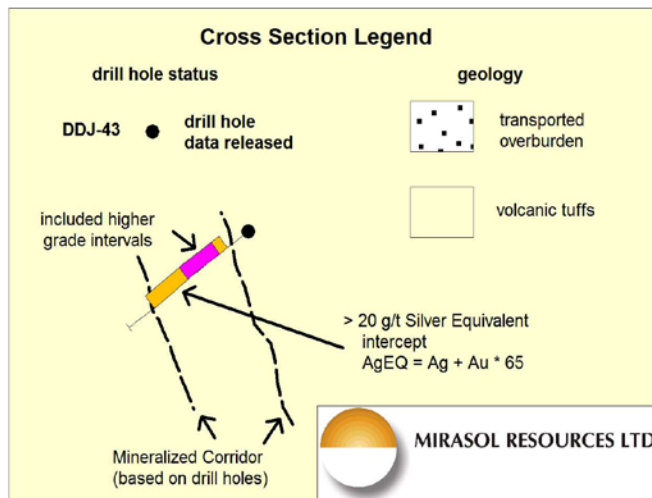
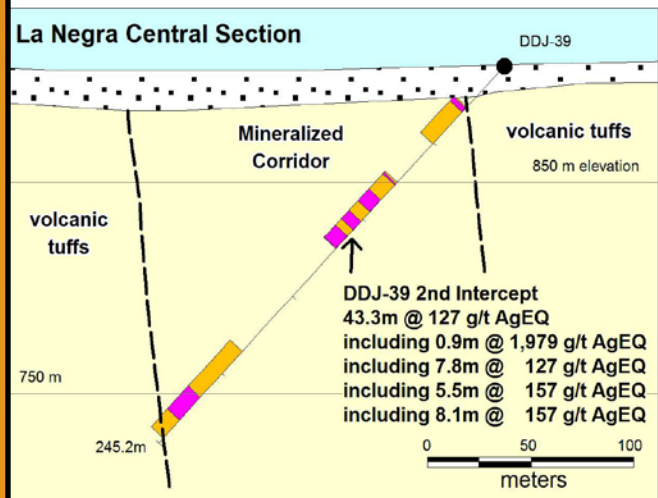
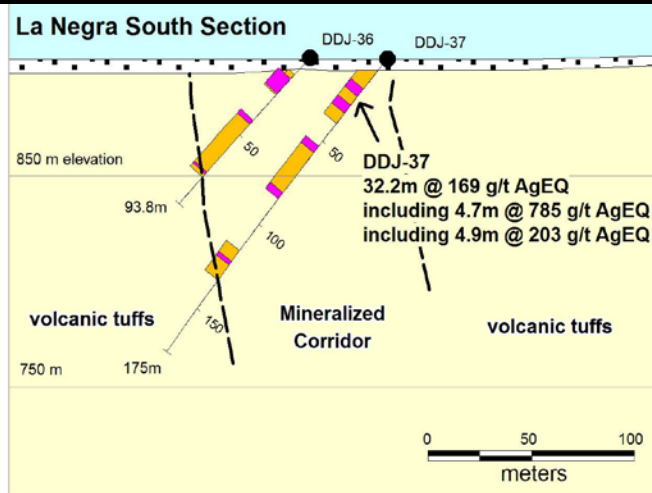
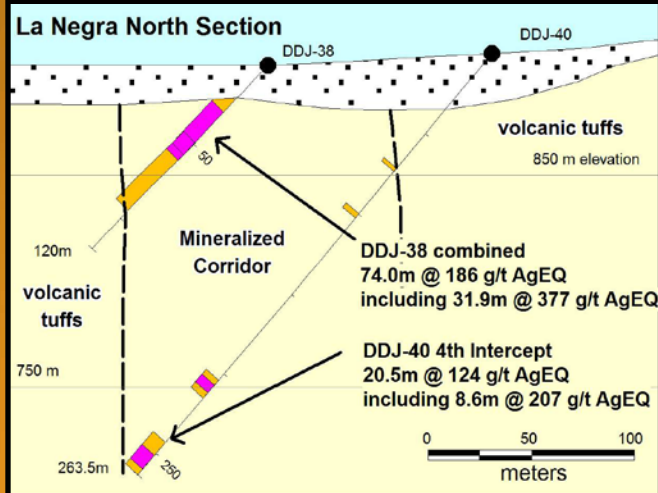
 360 to 3,101
 60 to 360
 10 to 60
 0 to 10



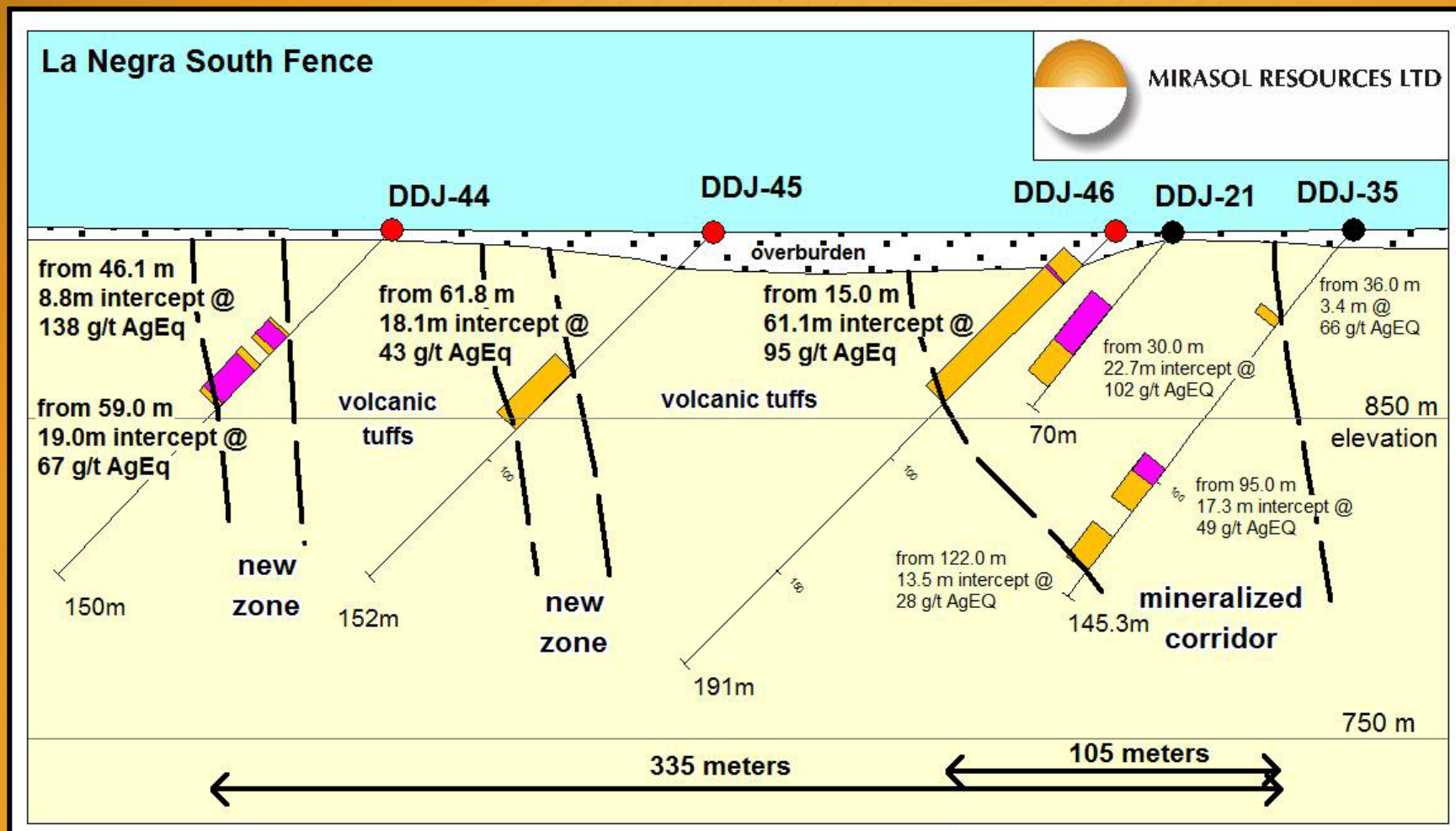
La Negra High-Grade Zone



La Negra Sections



La Negra – Potential for Parallel and Converging Mineralized Corridors



La Morocha Structure



Table 3. Joaquin Project – La Morocha Prospect Drill Results Jan. 11, 2010

| Drill Hole | Intercept | From (metres) | To (metres) | Intercept length (metres) | Core Recv. * (%) | Silver (g/t) | Gold (g/t) | AgEQ (g/t) |
|------------|---------------------------|---------------|-------------|---------------------------|------------------|--------------|------------|------------|
| DDJ-48 | | 141.7 | 152.6 | 10.9 | no data | 13 | 0.29 | 32 |
| DDJ-49 | 1st | 132.0 | 151.0 | 19.0 | no data | 258 | 0.07 | 262 |
| including | | 139.0 | 150.0 | 11.0 | no data | 314 | 0.08 | 320 |
| DDJ-49 | 2nd | 158.8 | 167.0 | 8.2 | no data | 43 | 0.12 | 51 |
| DDJ-50 | | 71.0 | 83.0 | 12.0 | no data | 3 | 0.43 | 31 |
| DDJ-51 | | 99.0 | 111.1 | 12.1 | no data | 38 | 0.18 | 50 |
| DDJ-52 | | 79.3 | 100.3 | 21.0 | no data | 63 | 0.24 | 78 |
| including | | 83.2 | 89.0 | 5.8 | no data | 118 | 0.50 | 150 |
| DDJ-53 | | 41.3 | 45.0 | 3.7 | no data | 5 | 1.18 | 81 |
| DDJ-54 | | 4.6 | 8.5 | 3.9 | no data | 17 | 1.25 | 98 |
| DDJ-55 | 1st | 0.0 | 22.1 | 22.1 | no data | 33 | 0.01 | 33 |
| DDJ-55 | 2nd | 54.9 | 90.5 | 35.7 | no data | 129 | 0.11 | 136 |
| including | | 62.3 | 68.3 | 6.0 | no data | 391 | 0.45 | 420 |
| DDJ-56 | no significant intercepts | | | | | | | |
| DDJ-57 | | 3.15 | 28.40 | 25.25 | no data | 47 | 0.01 | 48 |
| including | | 11.05 | 17.40 | 6.35 | no data | 77 | 0.01 | 78 |

* Core recovery information not available at this time.

- Silver equivalent is calculated as AgEQ g/t = Ag g/t + 65 x Au g/t. Metallurgical recoveries are unknown and therefore assumed to be 100%.

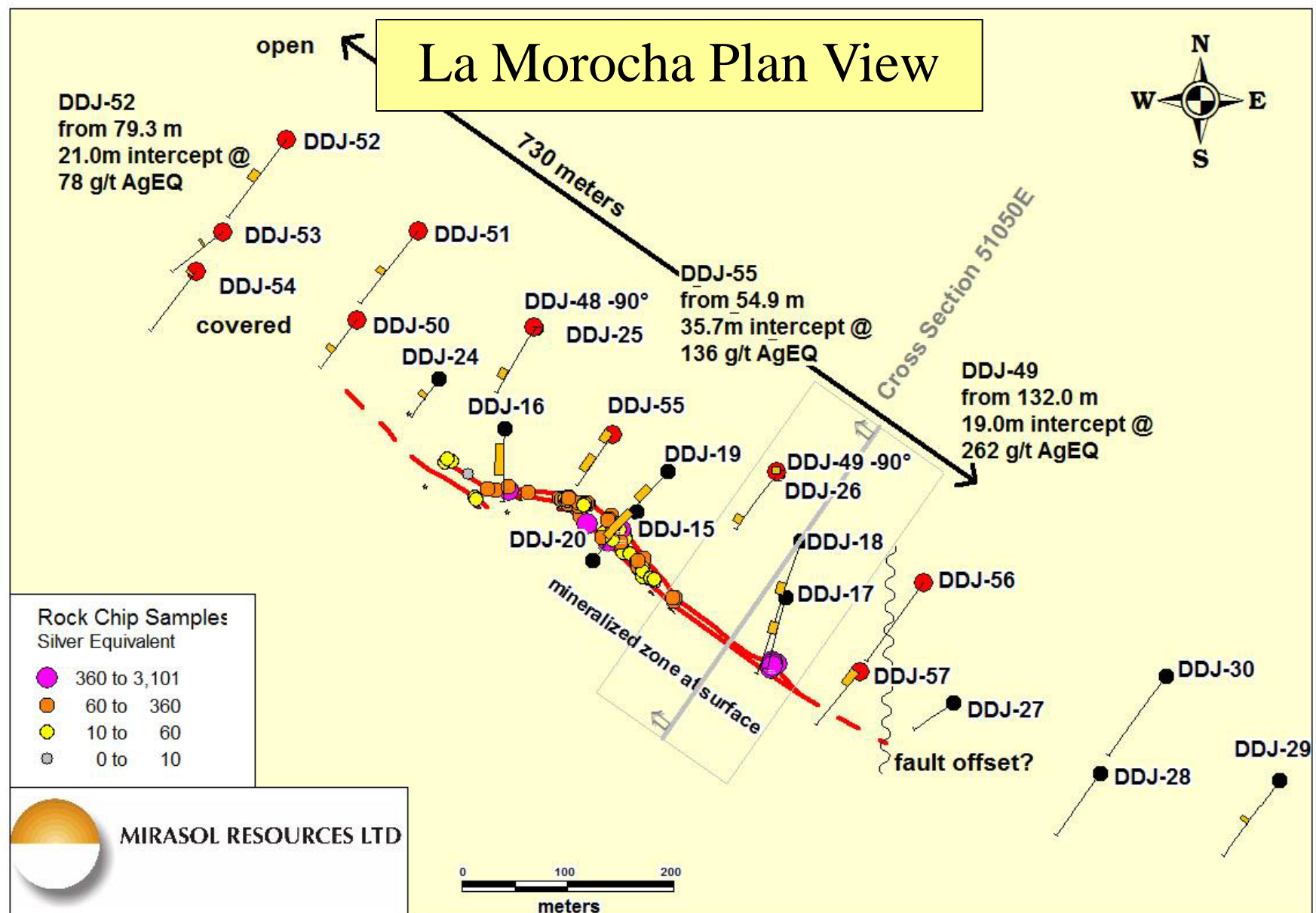
- Primary intersections are calculated at a cutoff grade of 20 g/t silver equivalent (AgEQ) with some internal dilution allowed at the discretion of the project's Qualified Person.

- "Including" intersections are calculated at a 50 g/t or higher cutoff grade.

- Reported grades are not capped.

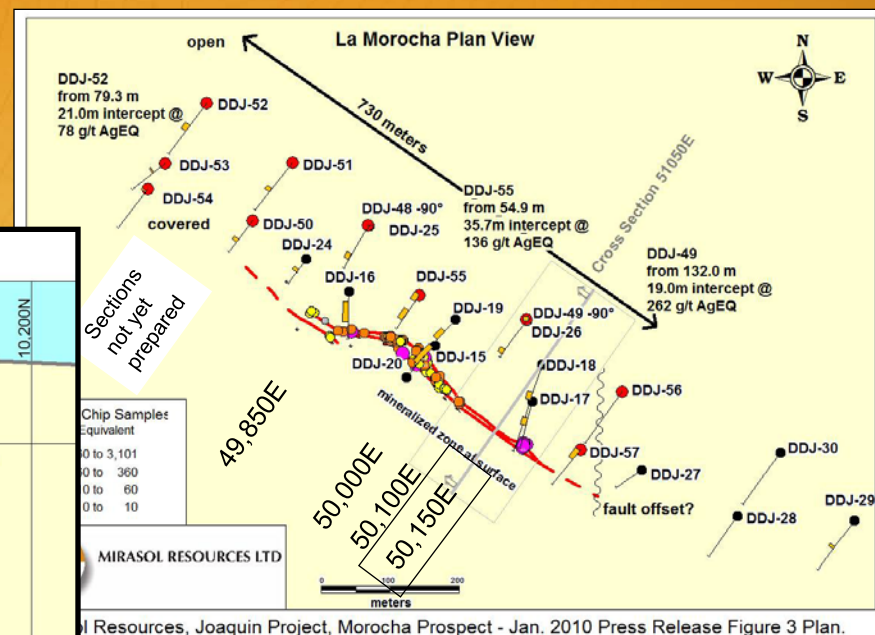
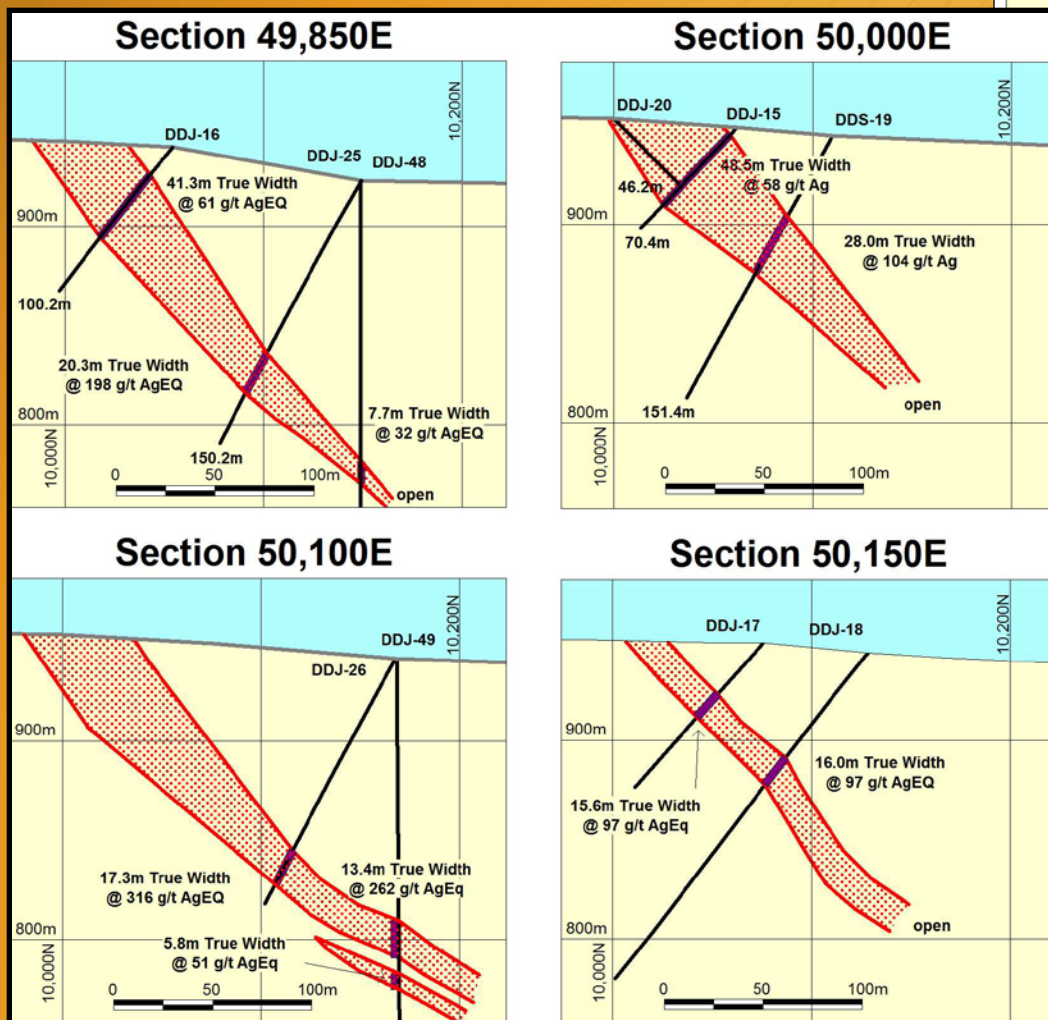
- Estimated true widths have not been calculated.





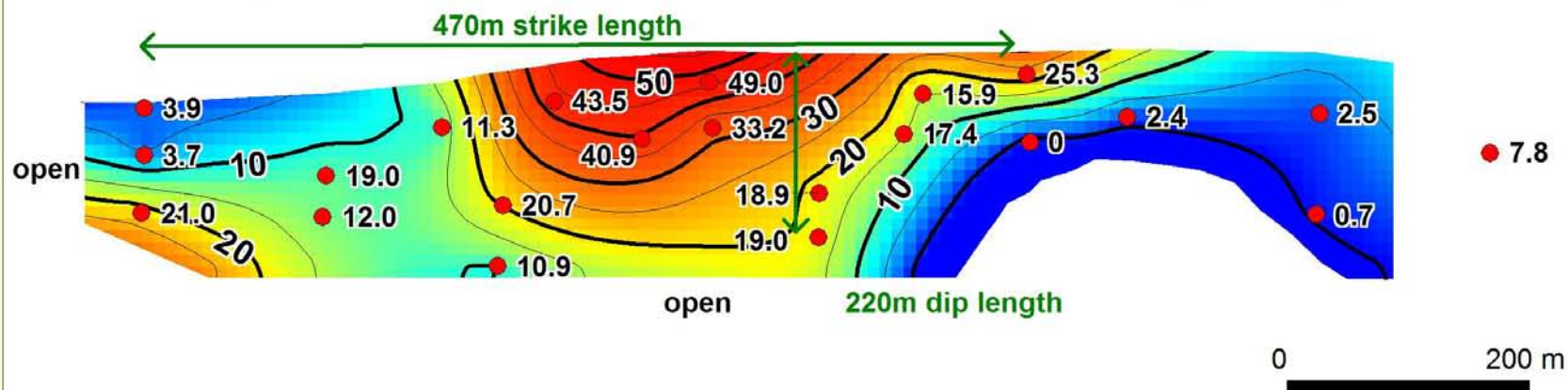
Mirasol Resources, Joaquin Project, Morocha Prospect - Jan. 2010 Press Release Figure 3 Plan.

La Morocha Published Sections

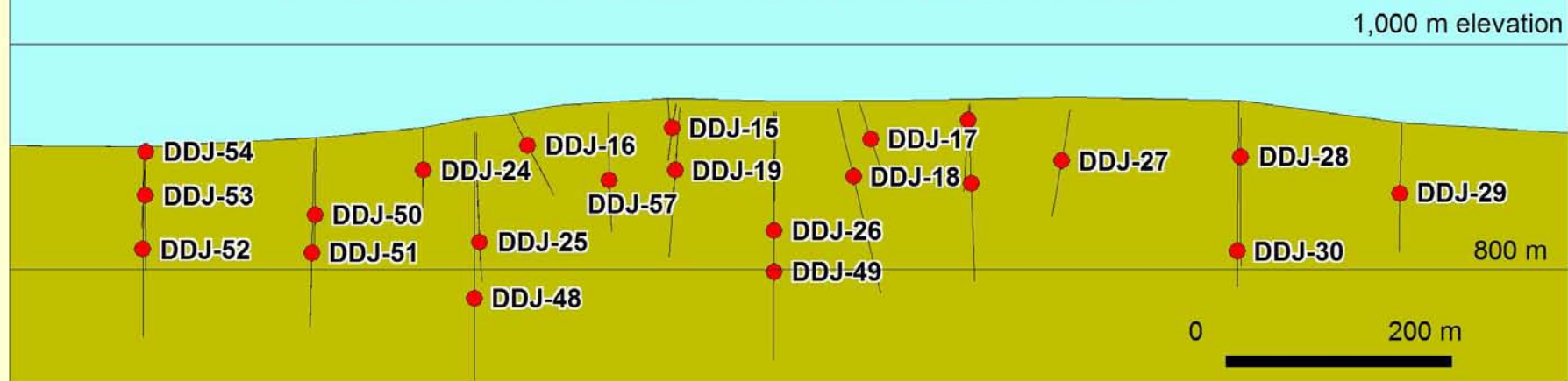


MIRASOL RESOURCES LTD
Resources, Joaquin Project, Morocha Prospect - Jan. 2010 Press Release Figure 3 Plan.

Morocha Mineralized Zone: Contoured True Width (metres)

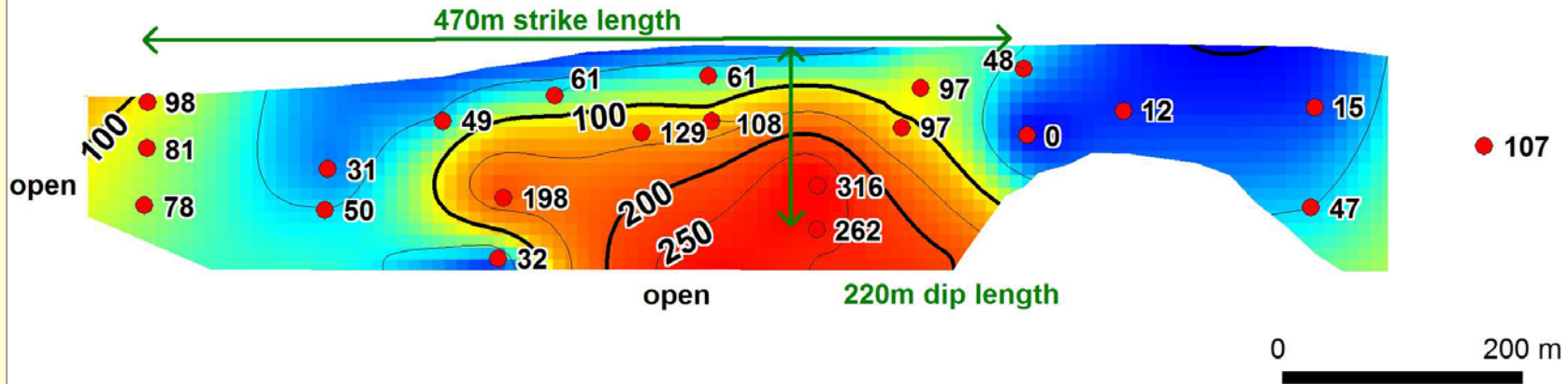


Morocha Mineralized Zone: Drill Hole Pierce Points

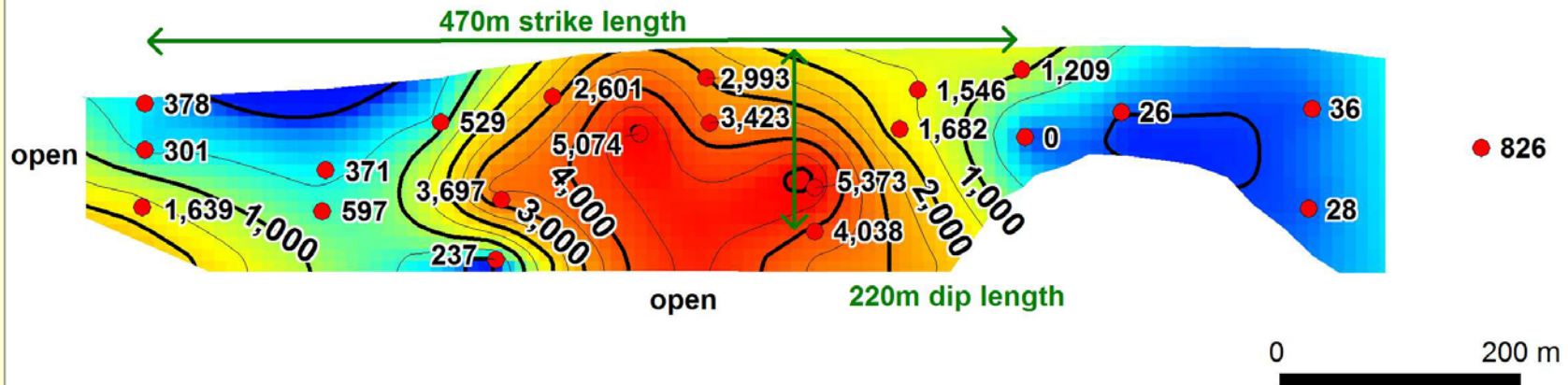


MIRASOL RESOURCES JOAQUIN PROJECT: MOROCHA ZONE - LONG SECTIONS

Morocha Mineralized Zone: Silver Equivalent Intercepts (true width metres @ AgEQ g/t)



Morocha Mineralized Zone: Silver Equivalent Grade x True Width (gram metres)





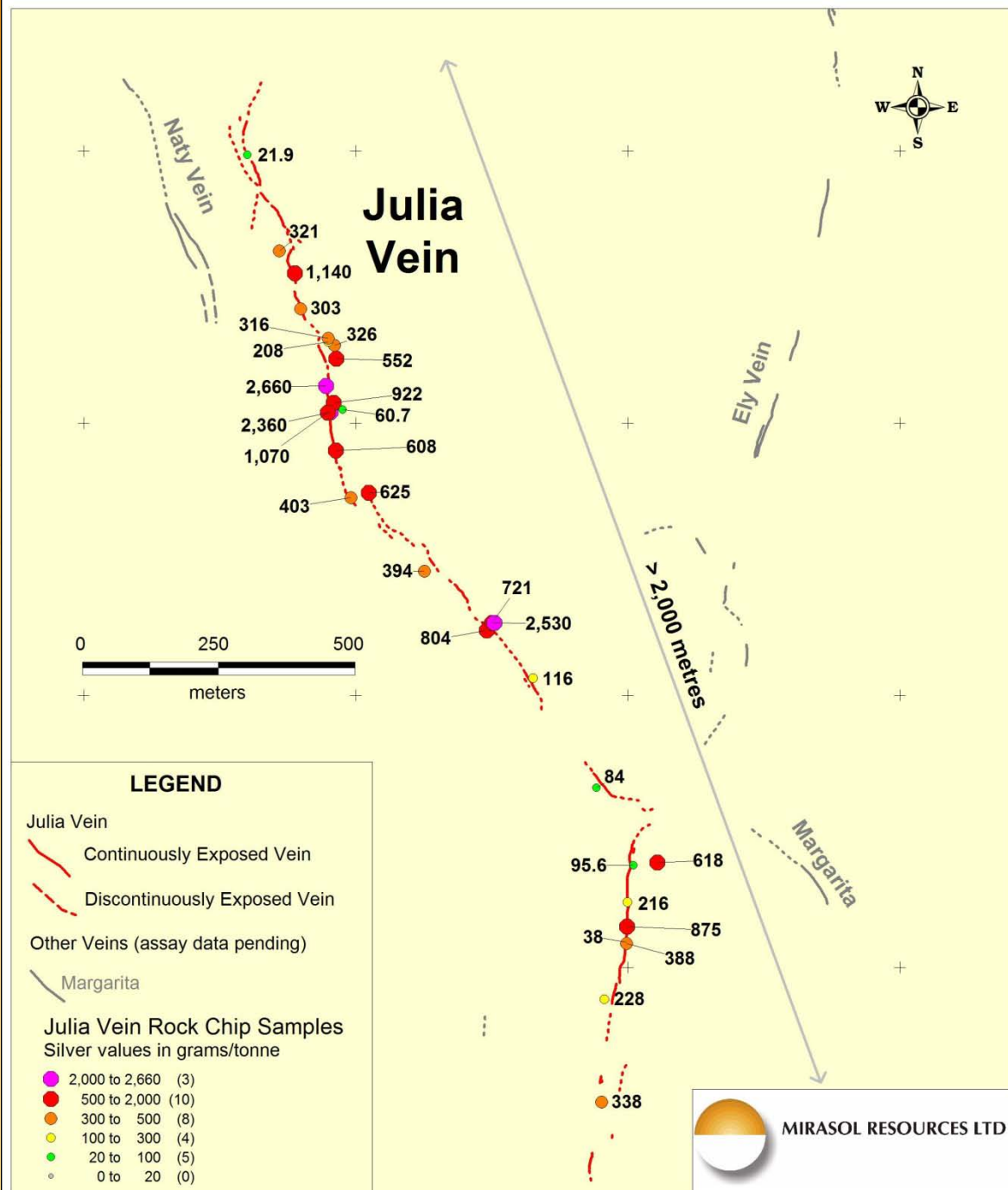
MIRASOL RESOURCES LTD

Virginia Vein Zone, Julia Vein – Mirasol's Newest Silver Discovery

Virginia Vein Zone

Julia Vein

- Grass roots discovery Nov '09
- 30 rock samples grade 21.9 to 2,660 g/t Silver
- > 2,000 metres length
- Additional veins found in Dec '09
- 283 rock samples collected
126 sawn channel samples
- Wide vein -- 1 to 5 metres
- Less than 4 km from provincial gravel highway
- Ground geophysics
- Easy to drill test



Veins Surrounding Julia have Silver Too!

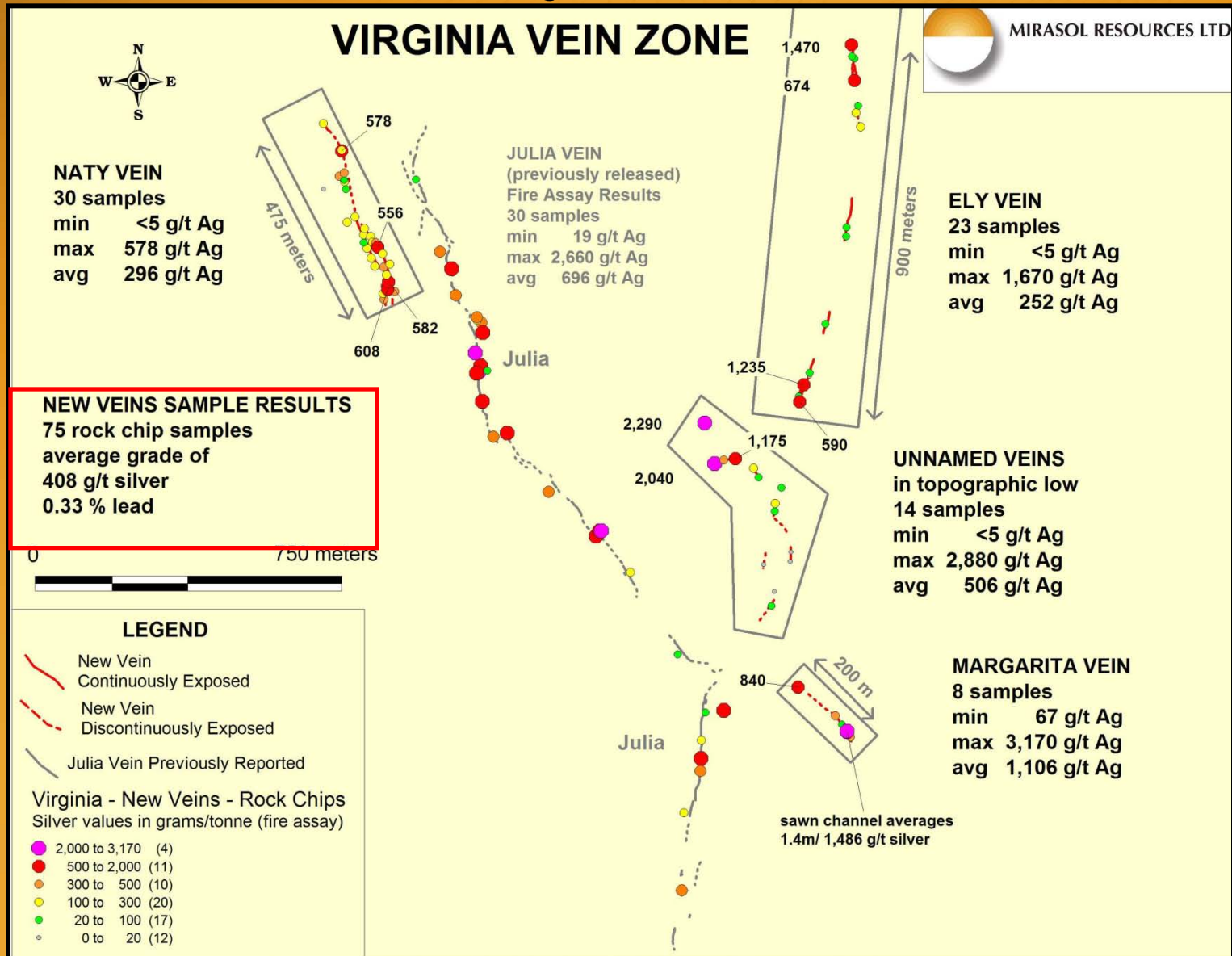


Figure 1. Silver results for the new veins of the Virginia Vein Zone. February 2010.

Channel Samples Confirm Grades at Julia Vein



MIRASOL RESOURCES LTD



VIRGINIA VEIN ZONE

JULIA VEIN SAWN ROCK CHANNEL SAMPLE RESULTS

**128 channel samples
totaling 73.88 linear metres
44 channels = LWA* grade
796 g/t silver
1.23 % lead
1.88 metres min. true width**

* LWA = Length Weighted Average

LEGEND

- Julia Vein Continuously Exposed
- - - Julia Vein Discontinuously Exposed
- other known veins

Julia Vein - Sawn Rock Channel Samples
minimum true width metres / silver g/t

- 2,000 to 4,740 (3)
- 500 to 2,000 (18)
- 300 to 500 (13)
- 100 to 300 (8)
- 20 to 100 (2)
- 0 to 20 (2)

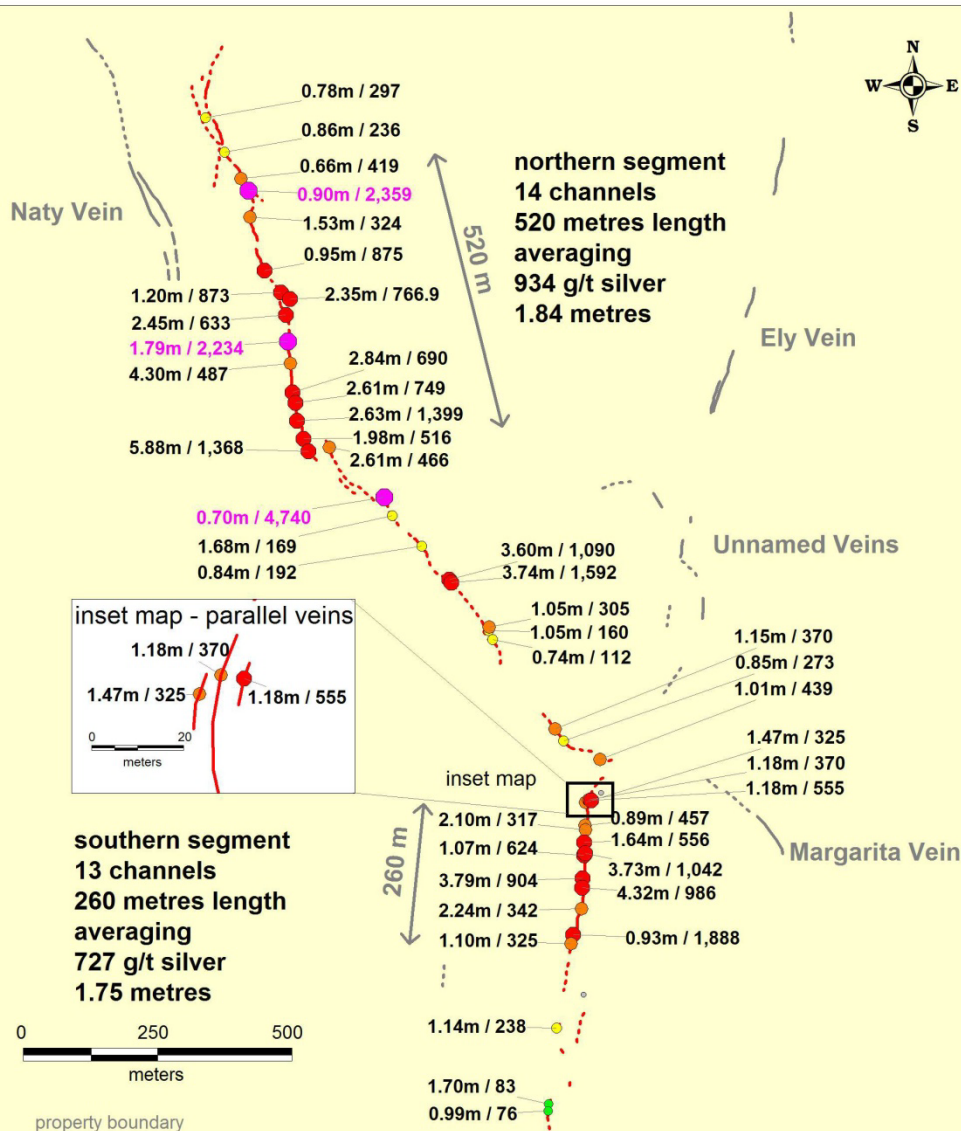


Figure 1. Silver results for the sawn channel samples of the Julia Vein, Virginia Vein Zone. March 2010.

Virginia Vein System

Julia Vein





Thank You – Muchas Gracias

The Mirasol Team

March 22, 2010

